



# 500

## E MAIN

### *WHERE CLASSIC MEETS MODERN*

Offering a mix of full floor  
and multi-tenant plans

Modernized creative  
spaces in Norfolk's  
most desirable location



*Achieve  
Ambitions*

**KRIS KENNEDY**

Senior Associate  
+1 757 965 2390  
[kris.kennedy@am.jll.com](mailto:kris.kennedy@am.jll.com)

**GREGG CHRISTOFFERSEN**

Senior Vice President  
+1 757 965 3009  
[gregg.christoffersen@am.jll.com](mailto:gregg.christoffersen@am.jll.com)





500  
E MAIN

## ENVIRONMENT

- Suite renovations showcase the iconic building and creative design
- At the heart of Norfolk's buzzing downtown
- Potential for high profile exterior signage

## FLEXIBILITY

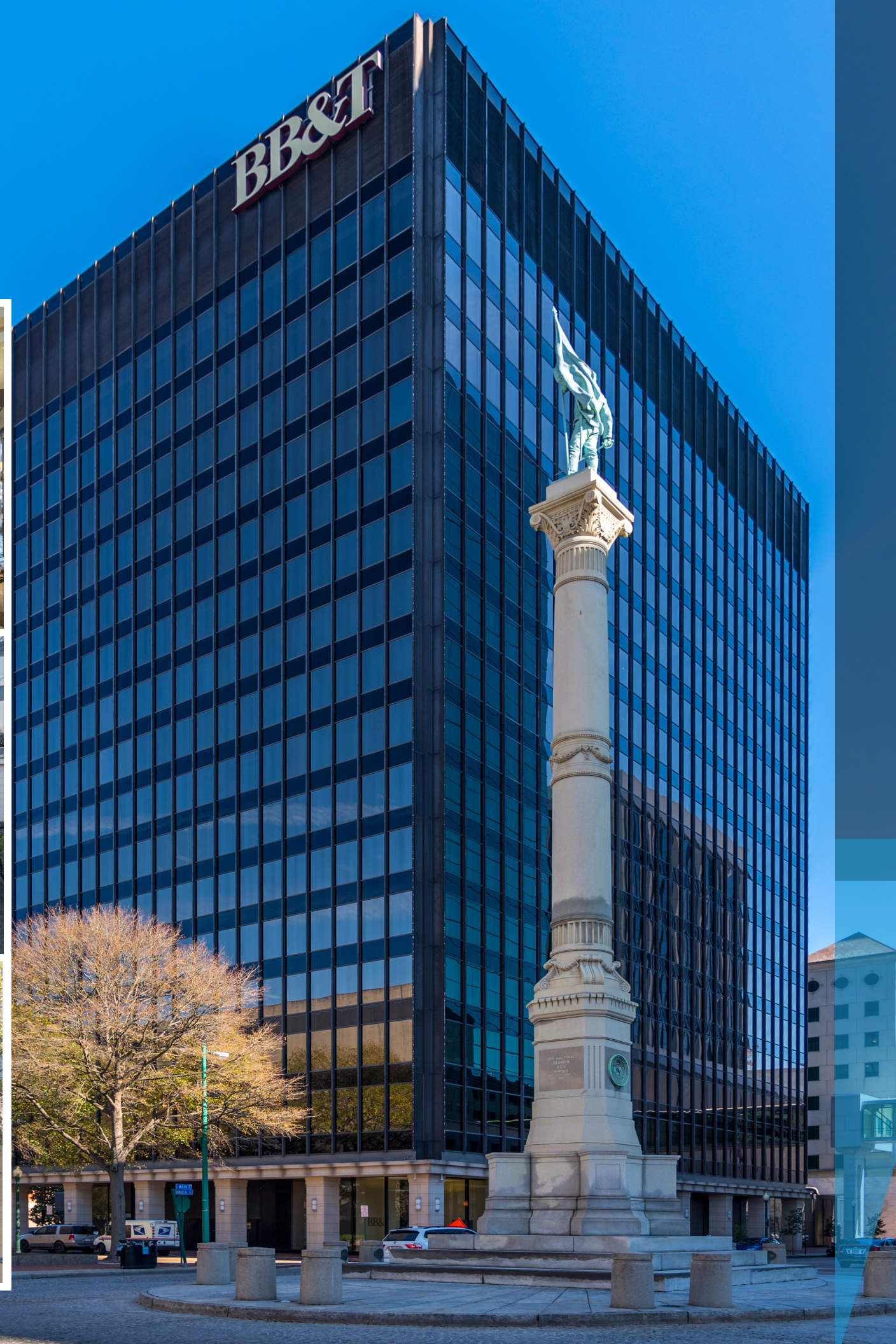
- Spaces designed with growth in mind.
- From approximately 805 s.f. – 14,860 s.f.
- Build-outs to meet your exact needs

## AMENITIES

- Onsite banking through BB&T
- Breakfast and Lunch deli operating onsite
- Garage parking

## SURROUNDINGS

- Centered amongst one of the region's highest concentration of restaurants, bars, shops, hotels, and transit
- Easy access to I-264 and Downtown Tunnel



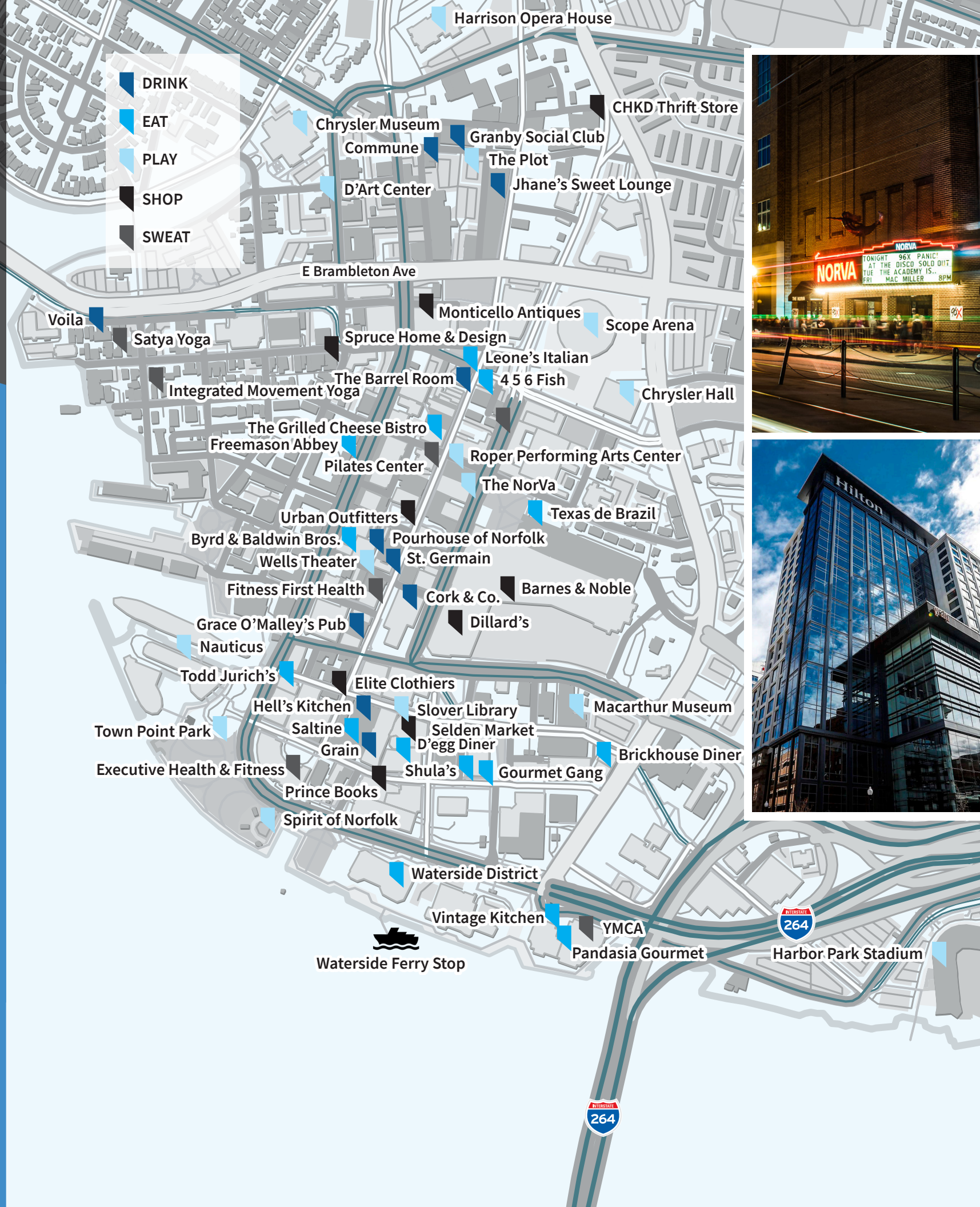


# DOWNTOWN NORFOLK REIMAGINED

Downtown Norfolk, the central business district of Hampton Roads, is a smart move for your business. The urban environment offers an array of amenities.

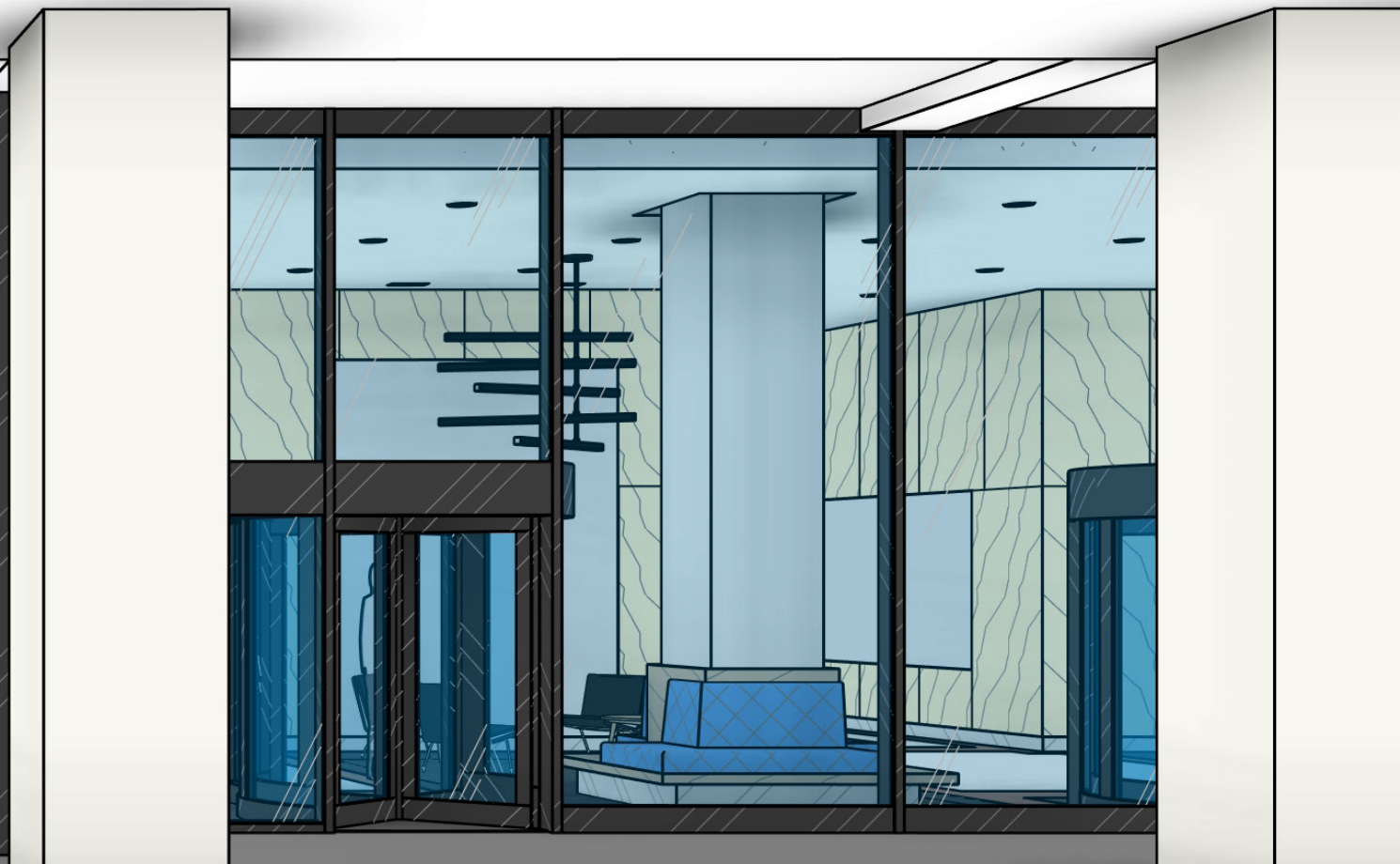
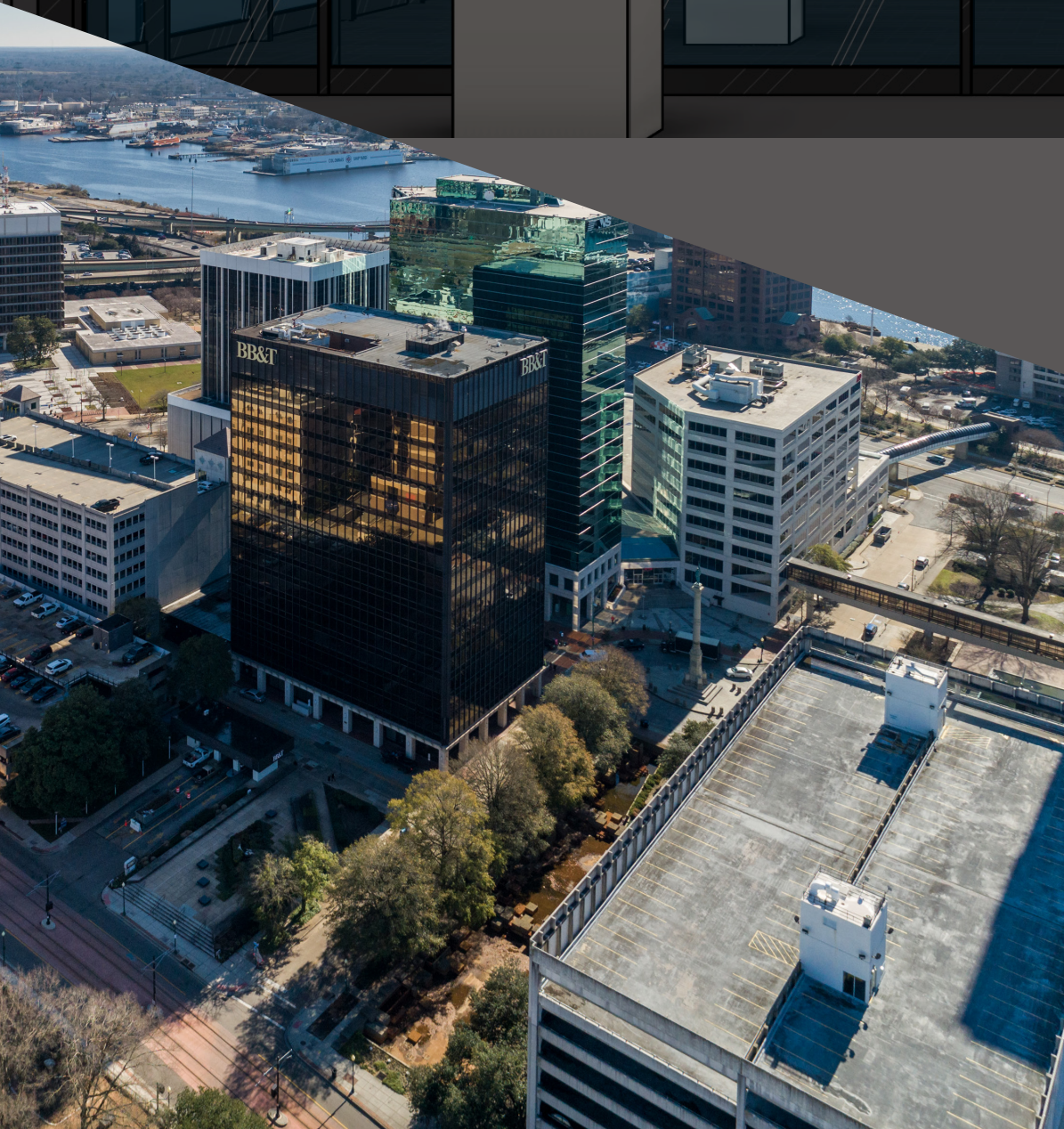
## UNBEATABLE ACCESS

- I-264
- Midtown Tunnel
- Tide light rail
- Elizabeth River Ferry





# TRANSFORMING THE WORKPLACE



From full floor build-outs to creative suites, 500 E Main has the perfect space solution for your organization. We look forward to working with tenants to create a space that fosters productivity and comfort.



500  
E MAIN



A tall, modern glass skyscraper with a grid-like facade. The BB&T logo is prominently displayed at the top. The building is situated in an urban environment with other buildings, trees, and a street visible in the foreground.

**BB&T**

**500**  
**E MAIN**

**GREGG CHRISTOFFERSEN**

Senior Vice President

+1 757 965 3009

[gregg.christoffersen@am.jll.com](mailto:gregg.christoffersen@am.jll.com)

**KRIS KENNEDY**

Senior Associate

+1 757 965 2390

[kris.kennedy@am.jll.com](mailto:kris.kennedy@am.jll.com)

